

STEPHEN & CO.
Auctions
01934 - 621101

ESTATE AGENTS
VALUERS
AUCTIONEERS
BLOCK MANAGEMENT
Established 1928



**FLAT 6, 35, BRISTOL ROAD LOWER,
WESTON-SUPER-MARE, BS23 2PP
FOR SALE BY PUBLIC AUCTION**

SOLD AT AUCTION FOR £60,000

13 Waterloo Street, Weston super Mare, BS23 1LA

www.stephenand.co.uk

post@stephenand.co.uk



Located in an elevated position above the Boulevard. A 1 Bedroom First Floor Flat. The property has gas central heating and has been recently rewired but requires further modernisation.

Accommodation:
(with approximate measurements)

Entrance:
External staircase to First Floor. Door to Communal Hall with further door to:-

Hall:

Lounge:
4.67m x 3.81m max (15'4 x 12'6 max)
Marble fireplace. Radiator. TV and telephone points.

Kitchen:
2.01m x 1.65m (6'7 x 5'5)
Wall and base units. Single drainer stainless steel sink unit. Plumbing for a washing machine. Cooker point. 'Ideal' gas fired boiler providing central heating and hot water.

Bedroom:
2.79m x 2.01m (9'2 x 6'7)
Radiator.

Bathroom:
Panelled bath. Low level WC. Pedestal wash basin.

Tenure:
Leasehold for an original term of 999 years from 25th December 1988, subject to a peppercorn Annual Ground Rent

Service Charge:
£360 per annum

Council Tax:
Band A

Conditions of Sale:
From the Solicitors-

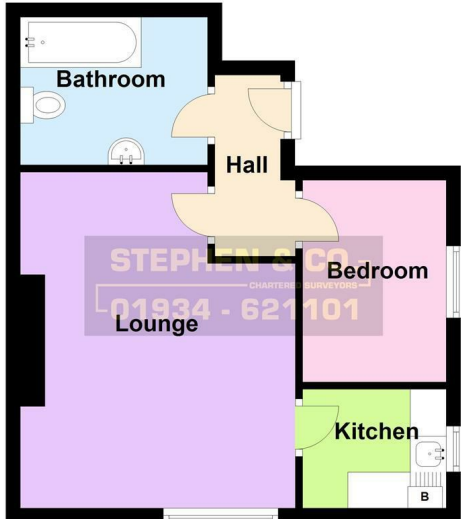
Rubric Law
One Temple Quay,
Bristol,
BS1 6DZ

Ref: Saira Iqbal
Saira.Iqbal@rubric.law
01454 210979

Data Protection:
When requesting a viewing or offering on a property we will require certain pieces of personal information from you in order to provide a professional service to you and our client. The personal information you have provided to us may be shared with our client, the seller(s), but it will not be shared with any other third parties without your consent. More information on how we hold and process your data is available on our website - www.stephenand.co.uk

The Agent has not tested any apparatus, equipment, fixtures and fittings or services and so cannot verify that they are in working order or fit for the purpose. A Buyer is advised to obtain verification from their Solicitor or Surveyor.. Items shown in photographs are NOT included unless specifically mentioned within the sales particulars. They may however be available by separate negotiation. Buyers must check the availability of any property and make an appointment to view before embarking on any journey to see a property.

First Floor
Approx. 34.3 sq. metres (369.4 sq. feet)



Total area: approx. 34.3 sq. metres (369.4 sq. feet)

Floor plans are for illustrative purposes only and not to scale. Whilst every effort is made to ensure they are as accurate as possible interested parties must satisfy themselves by inspection or otherwise of their accuracy.
Plan produced using PlanUp.

Energy Efficiency Rating		Current	Potential
Very energy efficient - lower running costs			
(92 plus) A			
(81-91) B			
(69-80) C			
(55-68) D		66	75
(39-54) E			
(21-38) F			
(1-20) G			
Not energy efficient - higher running costs			
England & Wales		EU Directive 2002/91/EC	